

## Tasmania

Finally, in turning to Tasmania, we must introduce two more of the giants of landscape photography in Australia. John Watt Beattie and the Spurling family, particularly Stephen Spurling III both had an immense impact upon the way in which people came to see Tasmania.

### JOHN WATT BEATTIE

John Watt Beattie was born in Aberdeen, son of a highly successful portrait photographer. John Beattie senior migrated to Australia on a matter of principle related to his place as an elder of the Church. His son, who arrived in Tasmania at the age of 19, set out to both capture the beauty of Tasmania with his photography and to record something of its tumultuous past. In 1879, he made the journey with several friends to Lake St. Clair and took the first dry-plate photographs of that area.

He entered into professional photography with the Anson Brothers in 1882, soon became a partner, and in 1891, bought the business. He rapidly expanded the operation, but continued his photography of the outdoors and of the historic sites of Tasmania. In 1896, he was appointed as official photographer to the Tasmanian government.

Some greater appreciation of Beattie's work can be gained from the fact that he photographed much of the rugged South-west, still seen as the preserve of experienced walkers, using a camera which weighed some 60 pounds, leave alone the plates and chemicals which he carried with him. Just as Kerry returned home from photographic journeys with mineral specimens, so Beattie came home with relics of the convict days or of early settlement.

His museum and art gallery became the greatest existing repository of historic items and of art in the colony. Eventually, it was sold to the City of Launceston, where it remains to this day. He then commenced a further accumulation, which in turn passed to the Hobart museum.

In due course, Beattie founded the Tourist Association of Tasmania and became its president. Amongst many other activities, the Association persuaded the government of the day to issue a set of stamps depicting Tasmanian landscapes (including Tasman's Arch) as a way of drawing attention to their beauty. This was done in 1899 - the first time a series of stamps were published as a means of tourist publicity, and the first set of stamps to depict landscapes. All were based upon Beattie's photographs, and many are seen on used postcards.

In fact, one commonly sees Tasmanian postcards which have not been postally used, but nevertheless have one of the Beattie stamps attached to the front. There are also the postcards which depict stamps arranged around a central view, and in the case of Tasmania, these always show the Beattie stamps. Such cards are known from Othmar Zieher, V.S.M. (Victorian Stamp Market), The Oceanic Stamp and Postcard Company, and the somewhat enigmatic Sanitoria Home for Consumptive Women. (Anon. 1983)

## Tasmania

In addition to his Tasmanian work, Beattie toured the Pacific in company with Bishop Montgomery and his son (later Field-Marshal Montgomery). His photographs from this tour were sold world-wide in immense numbers and provided not only an excellent record of the Island cultures, but also of the history of Norfolk Island. He also processed and printed the photographs brought back from the Antarctic by Roald Amundsen.

Although many of his photographs have been preserved, his negative collection was destroyed by fire in 1933, three years after his death at the age of 71 years. (Cato 1979 :80-87)

### STEPHEN SPURLING

The first of the photographer Spurlings (Stephen I) arrived in Tasmania, as a naval officer, in 1837. He transferred to the then Van Diemen's Land service as a surveyor, and at an early stage commenced experiments with photography. Finally, he resigned to establish a portrait studio in Hobart, together with his two sons, Stephen II and Frederick. Their work was largely in portraiture, but included a now-famous portrait of Truganini, famous for many years as the last full-blood survivor of the Tasmanian Aborigines. They won a medal for their work at the 1866 International Exhibition in Melbourne.

Stephen II moved to Launceston and opened a studio there, but also commenced outdoor photography. He had a special carriage on the Launceston and Western Railway set up for photography and processing of plates, and a hand-cart which he used to good effect in photographing the mining towns of the West Coast.

His son, Stephen III, also commenced his working life as a surveyor, and in this capacity developed his skills as a bushman and a bush photographer. He first photographed the mountains of the central plateau while engaged in cutting a track from Launceston to Zeehan. Then he turned his attention to the Mole Creek Caves, and his photographs remain to this day as outstanding examples of cave photography.

Again, he carried a weighty 12 inch by 10 inch camera with its plates and other equipment into some of Tasmania's wildest country. This included the Gordon and Franklin Rivers, the first winter ascent of Ben Lomond and the exploration of much of the Central Plateau and the Lake St. Clair-Cradle Mountain National Park, where he was responsible for naming many of the features. It was the photographs from his 1905 expedition which first attracted the notice of Gustav Weindorfer, builder of Waldheim and 'father' of the National Park.

He gradually ceased photography, as being completely uninterested in portrait photography, he converted the studio to a photographic supplies store, which in turn was sold to Kodak. But the immense number of landscape pictures which he had taken meant that he was the dominant figure in the postcard industry of Tasmania. (Cato 1979 : 165-7)

Tasmania : Mole Creek

MOLE CREEK CAVES

The caves at Mole Creek have been known since at least the 1830's. Initially they were known as the Chudleigh caves, named after what was then the nearest settlement. Two caves were developed for public display - Scott's Cave by the Scott family in 1908 and Baldock's Cave by the Government Tourist Department in 1910 - but inappropriate use of acetylene lighting caused rapid deterioration of these caves and they were closed. Vandalism has since further damaged what remained, so that the beauty recorded by Spurling can no longer be seen.

Marakoopa Cave was discovered by the Byard family in 1910, opened to the public in 1912 by them, and sold in 1919 to the state government, who have operated it as a tourist cave since then. King Solomon Cave was also discovered in 1906 and privately operated as a show cave until 1939, when it was again resumed by the State Government and operated by the Tourist Department. Both caves were placed under the control of the National Parks and Wildlife Service in 1975. (Skinner 1978)

As noted above, Mole Creek Caves were the second major photographic assignment undertaken by Stephen Spurling III. His photographs remain to this day as being of outstanding beauty. The time span covered by the postmarks noted below demonstrate the length of time over which his work remained readily available.

1. SPURLING DELORAINIE SERIES [n.l. 1905]

- Ph Stephen Spurling III  
Pu Spurling & Son. (card also has imprint of Launceston Examiner)  
F View has margins all round, but much wider on R.H. side. Spurling imprint in upper margin; that of Launceston Examiner and title in lower margin ; a further title and Spurling imprint is superimposed on photograph.
- 1.1 Entrance, Chudleigh Caves, Tasmania H [pm.26 Sep.1905]  
Also titled 'Chudleigh Caves, S. Spurling 785'  
This cave is now known as Wet Cave ; the photograph is taken from within the cave looking out the entrance and with minimal artificial lighting ; the result captures the atmosphere of the cave remarkably well.

2. SPURLING INDIVIDUALLY NUMBERED CARDS [n.l. 1907]

- Ph Stephen Spurling III  
Pu Spurling & Sons, Launceston  
Pr In Prussia (Germany)  
F B. & W. print with various titles ; publisher imprint and number, which we use below, both on back, which was printed in either black or sepia. Some minor variation occurs in format, which is related to the

cave depicted and is dealt with below. Cards in which the words 'Printed in Prussia' have been neatly but thoroughly erased are common. This is probably, as noted elsewhere, an expression of the widespread anti-German sentiment throughout Australia during and after World War I.

Tasmania : Mole Creek

Scott's Cave - title contained in white strip.

- 2.135 The Frozen Waterfall, Scott's Caves, Mole Creek, Tasmania V [ms.21 May.1914]
- 2.136 A Stray Sunbeam, Scott's Caves, Mole Creek, Tasmania H [pm.24 Dec.1911]
- 2.137 The King's Palace, Scott's Caves, Mole Creek, Tasmania H [pm.5 Jun.1908]
- 2.138 Entrance to King's Palace, Scott's Caves, Mole Creek, Tasmania H [pm.24 Dec.1907]
- 2.139 In Scott's Cave, Mole Creek, Tasmania H [pm.15 Nov.1907]

King Solomon's Cave - title superimposed

- 2.400 The Gem of the West, /King Solomon's Caves, /Mole Creek, Tasmania V
- 2.401 The Crystal Corner, /King Solomon's Caves/Mole Creek, Tasmania H [ms.8 Dec.1909]
- 2.402 Nelly's Grotto, /King Solomon's Caves, /Mole Creek, Tasmania V
- 2.403 St. Paul's Dome, /King Solomon's Caves, /Mole Creek, Tasmania V
- 2.404 The Harp of Erin, /King Solomon's Caves, /Mole Creek, Tasmania V
- 2.405 The Gem of the Isle, /King Solomon's Caves, /Mole Creek, Tasmania V [pm.3 May 1909]
- 2.406 The Grand Shawls, /King Solomon's Caves, /Mole Creek, Tasmania V
- 2.407 Mum's Bower, /King Solomon's Caves, /Mole Creek, Tasmania V
- 2.408 The Octopus, /King Solomon's Caves, /Mole Creek, Tasmania V [ms.9 May 1915]
- 2.409 Pompey's Column, /King Solomon's Caves, /Mole Creek, Tasmania V [pm.20 May 1913]
- 2.410 The Coral Rock, /King Solomon's Caves, /Mole Creek, Tasmania V
- 2.411 Entrance to Alexandra Bower, /King Solomon's Caves, /Mole Creek, Tasmania H
- 2.412 The Marble Pillar, /King Solomon's Caves, /Mole Creek, Tasmania V
- 2.413 Faith, Hope & Charity, /King Solomon's Caves, /Mole Creek, Tasmania V
- 2.414 Victoria Falls, /King Solomon's Caves, /Mole Creek, Tasmania V
- 2.415 The Sparkling Canopy, King Solomon's Caves, /Mole Creek, Tasmania V
- 2.416 The Golden Grapes, /King Solomon's Caves, /Mole Creek, Tasmania H
- 2.417 The Furze Bush, /KING Solomon's Caves, /Mole Creek, Tasmania H
- 2.418 Egyptian Canopy, /King Solomon's Caves, /Mole Creek, Tasmania V

- 2.419 Alexandra Bower,/King Solomon's Caves,/Mole Creek,  
Tasmania V
- 2.420 The Queen's Shawls,/King Solomon's Caves,/Mole  
Creek, Tasmania V
- 2.421 The Golden Gate,/King Solomon's Caves,/Mole Creek,  
Tasmania V
- 2.422 The Proscenium,/King Solomon's Caves,/Mole Creek,  
Tasmania V

Tasmania : Mole Creek

- 2.423 The King Pin,/King Solomon's Caves,/Mole Creek,  
Tasmania V

Scott's Cave - title contained in white strip.

- 2.424 The Grand Arch, Scott's Caves, Mole Creek, Tasmania H
- 2.425 The Queen's Palace, Scott's Caves, Mole Creek,  
Tasmania H
- 2.426 Crystal Palace, Scott's Caves, Mole Creek, Tasmania V
- 2.427 Coronation Corner, Scott's Caves, Mole Creek,  
Tasmania H [pm.12 Nov.1909]
- 2.428 Pan's Bower, Scott's Caves, Mole Creek, Tasmania V
- 2.429 The Waterlilies, Scott's Caves, Mole Creek, TasmaniaV
- 2.430 The Shrine, Scott's Caves, Mole Creek, Tasmania V
- 2.431 The Crystal Gate, Scott's Caves, Mole Creek,  
Tasmania V
- 2.432 The Arctic Canopy, Scott's Caves, Mole Creek,  
Tasmania H
- 2.433 The Nobbies, Scott's Caves, Mole Creek, Tasmania H
- 2.434 The Unicorn, Scott's Caves, Mole Creek, Tasmania H  
[pm.23 Sept.1909]
- 2.435 Diana's Bower, Scott's Caves, Mole Creek, Tasmania V  
[pm.25 Feb.1913]

Baldock's Cave - title superimposed in sepia

- 2.464 The Marble Hall,/Baldock's Caves,/Mole Creek,  
Tasmania H
- 2.465 The Fairy Canopy,/Baldock's Caves,/Mole Creek,  
Tasmania V
- 2.466 The Needle Gallery/Baldock's Caves,/Mole Creek,  
Tasmania H
- 2.467 The Meeting of the Pillars, Caves,/Mole Creek,  
Tasmania H

Marakoopa Cave - view enclosed in printed wood-grain frame ;  
title in white strip between frame & view.  
Marakupa in all titles is a redundant  
spelling.

- 2.654 The Palm Tree, Marakupa Caves, Circular Ponds,  
Tasmania V
- 2.655 David's Harp, Marakupa Caves, Circular Ponds,  
Tasmania V
- 2.656 The Garden of the Gods, Marakupa Caves,  
Circular Ponds, Tasmania H  
[Message on back says 'This is the Gutz of a part of  
Mole Creek.']
- 2.657 The Nymph's Bath, Marakupa Caves,/Circular  
Ponds, Tasmania V [pm.1 Apr.1919]

3. SPURLING REAL PHOTO SERIES (Numbered)

Ph Stephen Spurling III  
 Pu Spurling & Son  
 F Real photo ; title, serial number & publisher imprint  
 superimposed in *Italic caps* ; narrow margins all round

3.1279 The Octopus Cave, King Solomon's Caves V K-D  
 3.1301? The Waterlilies. Scott's Caves. Tas. H K-D  
 (s.n.a. 2.429)  
 3.1322 The Meeting of the Pillars. Baldocks Caves H  
 3.1323? Glistening Glen. Baldocks Caves H  
 3.1324 Fairys Canopy. Baldocks Caves V K-D(B)  
 (s.n.a. 2.465) SAME K-D(F)  
 SAME  
 3.1326 Needle Gallery. Baldocks Caves H K-D  
 (s.n.a. 2.466)  
 Tasmania : Mole Creek

4. SPURLING REAL PHOTO SERIES (Embossed)

Ph Stephen Spurling III  
 Pu Spurling & Son  
 F Real photo; title superimposed in script ; publisher  
 imprint blind embossed ; narrow margins all round

4.1 Gem of the West/ King Solomons Caves/Tas H K-D  
 4.2 St. Pauls Dome/King Solomons Caves Tas V K-F  
 (s.n.a. 2.403)  
 4.3 The Bower/King Solomons Caves/Tas V K-D  
 (s.n.a. 2.407)  
 4.4 The Menagerie/King Solomons Caves/Tas V K-D  
 (s.n.a. 2.408)  
 4.5 Pompeys Pillar/King Solomons Cave/Tas V K-D  
 SAME K-F  
 4.6 Sparkling Canopy/King Solomons Caves/Tas V K-D  
 (s.n.a. 2.415)  
 4.7 The Queens Shawls/King Solomons Caves/Tas V K-D  
 (s.n.a. 2.420)  
 SAME K-F  
 4.8 The Proscenium/King Solomons Caves Tas V K-D  
 4.9 Templegate/King Solomons Caves/Tas V K-F  
 4.10 Angels Paradise/King Solomons Caves/Tas V K-D  
 4.11 Gnomeland/King Solomons Caves Tas V K-D  
 4.12 The Organ Pipes Baldocks Caves/Tas V K-D  
 4.13 Fairy Canopy Baldocks/Caves Tas V (s.n.a. 2.465) K-F

5. SPURLING REAL PHOTO SERIES (Un-numbered)

Ph, Pu & Pr(?) Stephen Spurling III  
 F Real photo with narrow white margins & superimposed  
 title in *italic caps*.

5.1 Fairy Canopy Baldocks /Caves Tas. V K-D  
 (s.n.a. 2.465)  
 5.2 The Organ Pipes Baldocks Caves/ Tas. V K-D  
 (s.n.a. 4.12)  
 5.3 The Menagerie Baldocks Caves Tas. H K-F  
 5.4 Meeting of the Pillars Baldocks Caves Tas. H K-D  
 (s.n.a. 3.1322)  
 5.5 The Grotto Baldocks Caves Tas. H K-D

## 6. ROSE SERIES

Ph, Pu & Pr      Rose Stereograph Co., Armadale  
F      Standard Rose Format ; we have used the Rose serial  
number in our number below.

6.P12473	Tourist Bus leaving Launceston for Mole Creek Caves, Tas. (Tasmanian Transport Photo) H	R5
6.P12483	Temple Gate, King Solomons Caves, T. V	R5
6.P12484	Pompey's Pillar, King Solomons Caves, T. V	*
6.P12485	The Proscenium, King Solomons Caves, T. V	*

Tasmania : Mole Creek

## 7. COMET /ASTERISK SERIES

F      Real photo in sepia with superimposed title in fancy  
scrollwork, logo and copyright with number (see  
detailed description following Jenolan 63).

7.1509	Entrance to the Receiving Hall/Scotts Caves, Mole Creek, Tas. V [pm.8 Mar.1916]	K-?
7.1519	Diana's Bower, Scott's Caves/Mole Creek, Tas. V	K-D
	Sender says, "...they are lovely. I felt a bit frightened when I first went in. There was a man got lost in the caves. Thought he could find his own way & took four hours to find him"	
7.x	?Waterlilies, Scott's Caves/Mole Creek, Tas. H	K-D
	Our copy faded, number and title unclear Message on back (from same sender) says, "I also saw a big black snake 3 ft. 6 inches long just lying at the entrance gate to go into the cave. Uncle Len killed it"	

We also list below cards which are only known from the  
photographic copies in the Drier collection (see following  
Jenolan 63) and for convenience, repeat those already noted  
above.

1501	The Shawls, Scott's Caves/Mole Creek, Tas. H	F U
1502	Nellie's Grotto, Scott's Caves/Mole Creek, Tas. H	F U
1503	The Nobbies, Scott's Cave/Mole Creek, Tas. V	F U
1504	King's Table, Scott's Cave/Mole Creek, Tas. H	F U
1505	Bell Chamber, Scott's Cave/Mole Creek, Tas. V	F U
1508	The Unicorn, Scott's Cave/Mole Creek, Tas. H	F U
1509	Entrance to the Receiving Hall/Scotts Caves, Mole Creek, Tas. H [pm.8 Mar.1916]	F K-D
		SAME U
1510	The Grand Arch, Scott's Cave/Mole Creek, Tas. H	F U
1511	The Crystal Palace, Scott's Cave/Mole Creek, Tas. V	F U
1512	The Crystal Gate/Scott's Cave/Mole Creek, Tas. V	F U
1513	Snowdrift, Scott's Cave/Mole Creek, Tas. H	F U
1514	The Shrine/Scott's Cave/Mole Creek, Tas. V	F U

1515	Bee-hive, Scott's Cave/Mole Creek, Tas. V	F U
1516	Entrance to Kings Palace, /Scott's Cave Tas. H	F U
1517	The Queen's Palace, Scott's Cave/Mole Creek, Tas. V	F U
1518	The Queen's Palace, Scott's Cave/Mole Creek, Tas. V (different view)	F U
1519	Diana's Bower, Scott's Caves/Mole Creek, Tas. V	F K-D
		SAME U
1520	Elephant's Trunk/Scott's Cave Tas. V	F U
1521	Coronation Corner, Scott's Cave/Mole Creek, Tas. H	F U
1522	The Shrine, Scott's Cave/Mole Creek, Tas. H	F U
1523	The Waterlilies, Scott's Caves/Mole Creek, Tas. H	F K-D
		SAME U
1524	Grand Shawls, Scott's Cave/Mole Creek, Tas. V	F U
1525	Princess Corner, Scott's Cave, Mole Creek, Tas. H	F U
1570	Alum Gorge & Mersey River, Mole Creek, Tas. H	U
	(this card has a variant on the 'fern' symbol, which is not in a circle, but has quotation marks on either side and is followed by the word 'series')	

8. BEATTIE STUDIOS [n.l. 1918]

Ph John Watt Beattie  
 Pu & Pr Beattie Studios  
 F Real photo with superimposed title (not 8.2). Beattie  
 Studios imprint on back.

8.1 At Entrance Scotts Caves. 1244. V [ms.28 Apr.1918] K-D  
 8.2 This card appears to be a personal photograph, as the  
 message on the back says 'This is in Scott's Caves,  
 Mole Creek. The figures are so miniature will tell you  
 who they are as you might not recognize them, to the  
 left, Grace sitting down, then myself, Coral, & a  
 friend of ours, Mr. Stewart.' The title 'Scotts Caves,  
 Tas.' is hand-written in ink on the front. However, the  
 same photograph appears with a Beattie imprint in an  
 official brochure advertising the Mole Creek Caves, and  
 so is apparently a genuine Beattie. K-D

9. RICHARD GEE SERIES

Pu Richard Gee, Launceston  
 F Print with indistinct but generous margins. Imprint  
 along L.H. margin, title in lower margin. Back is  
 headed 'Tasmania Post Card.'

9.1 Cohen's Hole, near the famous Limestone Cliffs, Mole  
 Creek, Tasmania. H

10. HALE SERIES

Ph W. Hale  
 F Stereoscopic card with superimposed title, imprint and  
 serial number (used below) on undivided back

10.59 Scotts Caves Mole Creek Tas

11. SPURLING UN-TITLED SERIES



Ph, Pu & Pr(?) Stephen Spurling III  
F Real photo with narrow white margins

11.1 [Glistening Glen, Baldocks Caves] H

Tasmania : Mole Creek Advertising

1. J.C. GOODRIDGE'S HOTEL

Pu J.C. Goodridge's Hotel, Deloraine  
Pr F.W.N. & Co., Melbourne (= F.W. Niven - a firm who specialised in advertising cards of this kind, see Cook 1986, pp. 145-6)  
F Coloured picture of hotel with advertising messages, both superimposed and in wide L.H. margin.

- 1.1 Compliments from J.C. Goodridge/ Goodridge's Hotel Deloraine/ Nearest Hotel to Railway Station / . . splendidly situated for access to the lakes, caves, etc. H

Tasmania : Tasman Peninsula

Tasman Peninsula is a rugged area, comprised mainly of marine sediments but with some intrusions of dolerite. It is almost an island, being connected to the mainland only by a very narrow strip of land known as Eaglehawk Neck. It was initially developed as a penal colony, and is the site of the infamous Port Arthur. Erosion by the waves have provided for the development of a number of cave-like features, many of them very spectacular, and hence popular photographic subjects. (Kiernan 1979)

1. JOHN WATT BEATTIE SERIES BY GEE [n.l. 1905]

Ph John Watt Beattie  
Pu Richard Gee, Launceston  
F Full-frame view with superimposed title; publisher imprint on back.

- 1.1 Tasman's Arch, from below - sunrise, Eaglehawk Neck, Beattie V [pm.26 Jul.1905]  
Title also includes a serial number but this is illegible in our copy.  
This is a remarkable photograph. Two men are sitting on the rocks at sea level in the middle distance. Under normal circumstances, neither they nor the photographer could have occupied the positions they did - the seas would be far too rough.  
There is an excellent, although perhaps excessively retouched, print of this negative in the Australian Photographic Journal for 20 April 1901.

2. SPURLING B. & W. SERIES [n.l. 1916]

Ph Stephen Spurling III  
Pu Spurling & Son, Launceston  
Pr in Prussia (Germany)  
F Full-frame view with superimposed title ; back includes publisher imprint and serial number - we use the latter in our own number below.

- 2.239 Tasman's Arch, Eaglehawk Neck, S. Tasmania V  
2.244 The Blowhole, Eaglehawk/Neck, S. Tasmania H  
[pm.1916]

Tasmania : Tasman Peninsula

3. SPURLING COLOUR SERIES [n.l. 1911]

Ph Stephen Spurling III  
Pu Spurling & Son, Launceston  
Pr in Prussia (Germany)  
F Full-frame view ; back includes publisher imprint and  
serial number - we use the latter in our own number below.

- 3.480 Tasman's Arch, Eaglehawk Neck, S. Tasmania V  
[ms.6 Feb.1913]  
3.481 The Blowhole, Eaglehawk Neck, S. Tasmania H  
[pm.3 Apr.1911]

See also under 33

4. WALCH & SONS SERIES D [n.l. 1905]

Pu & Pr J. Walch & Sons, Hobart  
F View with margins on sides and lower edge; title in  
lower margin; publisher imprint on back.

- 4.1 Tasman's Arch V [ms.11 Apr.1905]

5. WALCH & SONS SERIES E [n.l. 1909]

Pu & Pr J. Walch & Sons, Hobart  
F View with margins on sides and lower edge; title in  
lower margin; publisher imprint on back; series  
number and type-face on back is only difference  
from previous series.

- 5.1 Tasman's Arch V [pm.3 Apr.1909 - in N.Z.] (s.n.a. 4.1)

6. Number not used.

7. WALCH & SONS SERIES G [n.l. 1905]

Pu & Pr J. Walch & Sons, Hobart  
F Full-frame view printed in colour with superimposed  
title and serial number which we use below ; publisher  
imprint on back.

- 7.7 Tasman's Arch V [pm.22 Dec.1905]

Tasmania : Tasman Peninsula

8. McVILLY & LITTLE B. & W. SERIES [n.l. 1909]

Pu McVilly & Little, Hobart [The name is variously abbreviated as M. & L. or McV. & L. on cards]

8A F Half-tone print with medium white margins & title in lower margin

8A.1 Tasman Arch V [pm.14 Jul.1911]

8B F Full-frame view with superimposed title in Roman caps with serifs. Collotype (?)

8B.2 Blow Hole, Eagle Hawk Neck, Tas. H [ms.20 Jan.1909] (Photograph by Verrell - see 11.2 below)

8B.3 Interior of Blow-hole Eagle-hawk Neck, Near Hobart H [pm.4 Dec.1914] (Photograph by Southey -see 9, 10, 24 below)

N.B. Several series include a scene titled 'At Blowhole, Eaglehawk Neck' which depicts the wave platform near the Blowhole, but does not show any aspect of the blowhole itself. We have not included any of these.

9. McVILLY & LITTLE COLOUR SERIES [n.l. 1910]

Pu McVilly & Little, Hobart

Pr In Saxony (Germany)

F Full-frame view in colour with superimposed title in white Italics ; publisher imprint on back.

9.1 Interior Blow-hole Eagle-Hawk-Neck, Tas. / Near Hobart - 1910 H (s.n.a. 8.2- Southey ) [ms.20 May 1912] No. 31 appears on L.H. back.

9.2 Tasmans Arch/Eagle Hawk Neck/Tasmania V No. 12 appears on L.H. back. [pm.20 Oct.1910]

We have no idea whether the figure 1910 in the card titles is a publication date or a serial number !

10. McVILLY & LITTLE COLOUR SERIES.

Pu McVilly & Little, Hobart

Pr In Saxony (Germany)

F Full-frame view with superimposed title in rather roughly lettered script ; publisher imprint and card serial number (which we use below) on back.

10.52 Tasman's Arch EagleHawk Neck, near Hobart, Tas. V (This view, 12.12 and 24.3 all appear somewhat

similar; not clear whether the differences are  
 due to varying negatives or to print variations)  
 10.59 Interior Blow Hole, Eagle Hawk Neck, Hobart, Tas. H  
 (s.n.a. 8.2- Southey)

# Tasmania : Tasman Peninsula

## 11. McVILLY & LITTLE COLOUR SERIES. (VERRELL) [n.l. 1908]

Ph E. Verrell (Operated the Royal Studio, Hobart from  
 1890 - Davis & Stanbury 1985 : 246)  
 Pu McVilly & Little, Hobart  
 Pr In Germany  
 F Full-frame view with superimposed title in Roman caps.;  
 publisher imprint on back which is printed in green  
 with control numbers

11.1 Tasmania (sic) Arch, Eagle Hawk Neck, Tasmania H  
 (control # 69307)

SAME with control # 99255

11.2 Blow Hole at Eagle Hawk Neck, Tasmania H (control  
 # 69818) (s.n.a.8.1) [pm.11 Apr.1917]  
 SAME but control # 99428. [pm.1908]

## 12. McVILLY & LITTLE COLOUR SERIES [n.l. 1910]

Pu McVilly & Little, Hobart  
 F View with wide margins all round ; title in lower  
 margin with serial number used in our number below ;  
 publisher imprint on back

12.12 Tasman Arch, Eagle Hawk Neck, Tas. V  
 [pm.17 Jan.1910]

## SUMMARY - McVilly & Little / Southey series.

Blowhole	8.1		11.2		
Interior Blowhole	8.2	9.1	10.59		24.2
Tasman's Arch		9.2			
Tasman's Arch			10.52	12.12?	24.3?
Tasmania (sic) Arch			11.1		34.1

## 13. J.W. BEATTIE TASMANIAN SERIES [n.l. 1904]

Ph John Watt Beattie  
 Pu Beattie  
 F Collotype with wide white margins ; imprint on front.  
 We treat this as 13A ; a further card, which is half-  
 tone printed from the same negative, has a wide lower  
 margin with serial number and title, we list as 13B.

13A.1 Tasman Arch H [pm.30 Jan.1904]

13B.38 Tasman Arch, Eagle Hawk Neck H [pm. 22 Dec.1923]

14. (unidentified) [n.l. 1907]

F Collotype card with title in wide lower margin

14.1 Blow Hole, Tasmania H [pm.14 Aug.1907]

Tasmania : Tasman Peninsula

15. FELLOWES REAL PHOTO SERIES.

Ph D.I.C.

Pu W. Fellowes, Hobart

F Real photo with narrow margins all round and title superimposed. Most cards have serial number added adjacent to title, but these are indecipherable in some cases. \* indicates back with publisher imprint

15.1 Remarkable Cave, Port Arthur, Tas. V \*K-F  
SAME K-B  
SAME Blank  
SAME [ms.21 Jan.1933] K-D  
Sender says "You would be fascinated for hours with the roar like two thunderstorms just here every time a roller comes in . . ."

15.2 Blowhole, Eaglehawk Neck, Southern Tas. 837 H K-D  
SAME \*K-D  
SAME \*K-C

15.3 Blow Hole, Eaglehawk Neck, Southern Tasmania 838 H \*K-D

15.4 Tasman's Arch, Eaglehawk Neck, Tas. 632 V K-D  
SAME \*K-F

15.5 The Haulage, Tasman Island Tooth H \*K-D  
(depicts a haulage up a sea cliff, with what appear to be two cave entrances)

15.6 Remarkable Cave, Port Arthur, Tas.51/ Natural Map of Tasmania H \*K-F

16. BARKER ADVERTISING SERIES [n.l. 1906]

Pu T.E. Barker, Furrier, Hobart

Pr Walch ? - view is part of 4.1

F Print with margins all round ; title and publisher imprint in lower margin which is much wider than others ; undivided back.

16.1 Tasman Arch H (s.n.a. 4.1) [pm.15 Jan.1906]

17. (unidentified) [n.l. 1906]

F Full-frame real photo with no title

17.1 (Tasman's Arch) V (back is photoprint 8 - Empire)  
[pm.27 Jul.1906]

18. (unidentified)

F Real photo with wide margins all round ; title is  
superimposed in neat script ; back is blank

18.1 The Blow Hole/Eaglehawk Neck H

19. VALENTINE B. & W. SERIES

Pu Valentine & Sons, Melbourne & Sydney

Pr In Great Britain

F Full-frame view with superimposed title in series as  
below. Control on front of card.

- Printed in sepia

- Control at lower R.H., title upper R.H.

V4 back 19A

- Control at lower R.H., title at bottom

V3B back 19B

- Control at upper R.H., title at top

V5 back 19C

- Printed in Green

- as 19B 19D

19A.1 Blowhole, Tasman Peninsula H Control 300.131

19A.2 Tasman's Arch, Tasman Peninsula V Control 300.124

19B.1 Blowhole, Tasman Peninsula H Control 300.131

19B.2 Tasman's Arch, Tasman Peninsula V Control 300.124

19C.1 Blowhole, Tasman Peninsula H Control 300.131

19D.1 Blowhole, Tasman Peninsula H Control 300.131

Tasmania : Tasman Peninsula

20. VALENTINE COLOUR SERIES [n.l. 1935]

Pu Valentine & Sons, Sydney

Pr In Great Britain

F Full-frame view with superimposed title ; back is V1.

20.1 Blowhole, Tasman Peninsula H (s.n.a. 19.1)

20.1 Tasman's Arch, Tasman Peninsula V [pm.3 Jul.1935]

21. VALENTINE GENUINE PHOTOGRAPH SERIES

Pu Valentine

F Real photo with wide margins all round ; title and  
imprint in lower margin with serial number used  
our number below.

21.3610 Tasman Arch/Eaglehawk Neck, Port Arthur V V9

21.3622 The Remarkable Cave, Port Arthur H V10

21.M4689 Blow Hole, Eaglehawk Neck, Port Arthur, V8

Tasmania H

22. ASH BESTER'S REAL PHOTO SERIES

Ph Beattie ?  
Pu Ash Bester  
F Real photo with margins all round & superimposed title  
in white as detailed below.  
Publisher imprint is often rubber-stamped on back.

This is an ambiguous series of cards ; it would appear from  
the sequence of captions below that recognition of Beattie  
has been progressively eliminated as Bester has taken over,  
but this may not be the actual situation.

22.1.1 Tasman's Arch 47b,a Beattie V K-D  
22.1.2 Tasman's Arch, Eag. Neck. Tas.  
J.B. Series No. 47a V K-D  
22.1.3 Tasman's Arch. Eaglehawk Neck. No. 47 V K-D  
SAME blank  
22.1.4 Tasman's Arch. Eaglehawk Neck. Tas. No. 47 V K-H  
22.1.5 Tasman's Arch. Eaglehawk Neck. Tas. /A.B. Series  
No. 47 V K-H  
22.2 Blowhole. Eaglehawk Neck. Tas. No. 144 H blank

23. J.C. HARRISON SERIES

Ph E.H.N.  
Pu J.C. Harrison, Store & Post Office, Eaglehawk Neck  
F Real photograph with hand-lettered title and Harrison  
imprint rubber-stamped on back.

23.1 Paterson's Arch / Near Eaglehawk Neck V  
This is a somewhat similar arch to the well-known  
Tasman's Arch, but smaller and situated further to  
the South.  
23.2 Tasman's Arch 300 feet high V

Tasmania : Tasman Peninsula

24. SOUTHEY REAL PHOTO SERIES

Ph C. Southey  
F Real photo with medium white margins ; title and  
superimposed in white.  
24.1 Remarkable Cave Port Arthur/showing natural map/  
Tasmania at entrance V K-D(4)  
24.2 Interior Blow Hole, Eaglehawk Neck Tasmania H K-D(7)  
(s.n.a. 8.2)  
24.3 Tasman's Arch Eaglehawk Neck Tasmania V K-D(7)

25. (unidentified)

F Collotype print with superimposed title.  
Back has "W.H. & Co." monogram trademark but not  
yet identified.

25.1 Blow Hole, Tas. V

26. (unidentified)

F Real photo in sepia with narrow margins ; Title  
superimposed in white caps.

26.1 Tasman's Arch H K-D(14)

27. (unidentified)

Pr In Germany

F Collotype print with title in Italic caps. & lower  
case in lower margin. In Sepia with title in green(A)  
and coloured with title in red (B)

27A.1 Blow Hole, Tasmania. H [pm.18 Dec.1905]

27B.1 Blow Hole, Tasmania. H

28. (unidentified)

F Real photo with medium white margins & superimposed  
title in rough Roman caps.

28.1 Tunnel to the/Blow Hole V K-A

29. BEATTIE REAL PHOTO SERIES

F Real photo with Beattie Studios imprint on back.  
Full-frame print with superimposed title and number,  
which we use below, at lower edge.

29.728 At the Blowhole, Eaglehawk Neck, Tas. H K-D

29.948 Tasman Arch H K-D

Tasmania : Tasman Peninsula

30. BEATTIE (?) REAL PHOTO SERIES

F This card is printed with a wide margin, and has a  
roughly lettered superimposed title. It shows the same  
viewpoint as #1.1 above, with the same clouds, but  
with the two men in slightly different positions.  
It has no imprint, and written on the back are the  
words 'Tasman's Arch looking up from below & looking  
out to the Pacific Ocean'. We tentatively assign it to  
Beattie simply because of the similarity of the  
photograph.

30.1 Tasman's Arch V K-D



31. BEATTIE REAL PHOTO SERIES [n.l. 1909]
- F These cards all have a Beattie Studios imprint on back, but are untitled, and like the card under Mole Creek 8, may be personal photographs. However, we have seen several copies of 31.1, and this suggests commercial production
- 31.1 (Blow Hole, Eagle Hawk Neck) H K-D  
SAME [pm. London 5 May 1909] Illus.
- 31.2 (Blow Hole, Eagle Hawk Neck - Lady with bonnet standing by guard rail in foreground) H K-D
32. ROSE SERIES
- Pu, Pr & F as normal Rose series
- 32.P12362 Tasman's Arch, Eaglehawk Neck, Tas. V R6  
32.P12372 Tasman's Arch, Eaglehawk Neck, Tas. V \*
33. SPURLING REAL PHOTO SERIES
- Ph Stephen Spurling III  
Pu Spurling & Son  
F Real photo with narrow white margin, superimposed title and Spurling imprint blind embossed.
- 33.1 Tasman's Arch/Eaglehawk Neck Tas. V K-D  
(s.n.a. 3.480)
34. WHITE'S SERIES [n.l. 1908]
- Ph Verrall  
Pu White's  
Pr in England  
F Full-frame Collotype with superimposed title in brown
- 34.1 Tasman's Arch at Eagle Hawk Neck, Tasmania H  
(s.n.a. 11.1) [pm.10 Aug.1908]
35. NEW ZEALAND SERIES
- Ph W. Fellowes, Hobart  
F Full-frame real photo, title superimposed in white  
Back imprinted "N.Z. Post Card"
- 35.1 Remarkable Cave, Port Arthur, Tasmania V (s.n.a. 15.1)
36. J.C. BREADEN SERIES
- Ph J.C. Braden, Hobart  
F Real photo with medium margins, initials 'J.C.B.', title and serial no. (which we use below) superimposed on negative ; back is rubber-stamped with words 'Post Card' and imprint
- 36.P23 Remarkable Cave H (internal view)  
36.P38 Remarkable Cave H (external view)  
36.P51 The Blow Hole, Eaglehawk Neck H
37. H. BAILY SERIES

Ph, Pu & Pr     H. Bailly  
F     Sepia real photo

37.1 Mouth of Blow Hole, Tas. Pen. H

38. H.J.H. SERIES

Ph, Pu & Pr     ? H.J.H.  
F     Real photo with medium margins ; title, number  
and imprint in white tablet on photograph. Back  
is blank.

38.158     Near Blow Hole, Eaglehawk Neck /Tasmania H  
38.162     Tasman's Arch, Eaglehawk Neck /Tasmania H

PERSONAL POSTCARDS

Some of the numbered cards above may well prove to be personal. Those which seem to certainly fit this category include a real photo of the Blowhole at Eaglehawk Neck, with a number of men in naval uniform sitting on the banks above the blowhole. There is no title, imprint or any other identification. Also a real photo on the Empire back, showing two women standing above Tasman's Arch.

Two other cards, apparently by the same photographer, depict the Tasman's Arch [on K-D(M)] and the Remarkable Cave [on K-D]. both have the name of the feature and the date November 1923 written in pencil on the back.

Tasmania : Hastings

The Hastings Caves were discovered in 1917 by timber workers, and during the 1930's were developed as a tourist attraction, being finally opened to the public on 19th. January 1939.

1. H.J.A. SERIES

Ph     H.J.A. ?  
F     Real photograph with narrow margins. One has imprint  
and title superimposed, another has title only and  
two have no details - but four were purchased  
together and appear to be part of the same series.

1.1	In Newdegate Cave, Hastings, Tas. V	K-D
1.2	Pipe Organ Newdegate/Cave Hastings Tas V	K-D
1.3	(Newdegate Cave) H	K-D
1.4	(Newdegate Cave) H	K-D

4. G.M.B. Series

Ph     G.M.B. ?  
F     Real photograph with narrow margins, superimposed title  
and imprint in white.

4.1 "The Chalet", Hastings Caves, Tasmania H     K-D

Tasmania : Brady's Cave

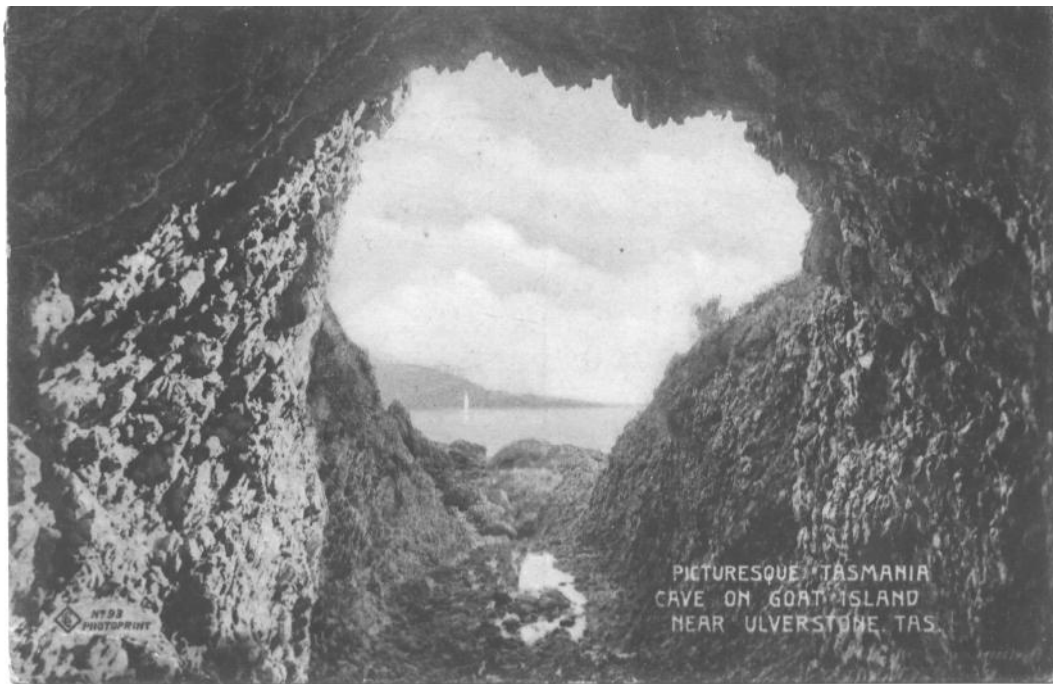
1. SPURLING INDIVIDUALLY NUMBERED CARDS [n.l. 1933]

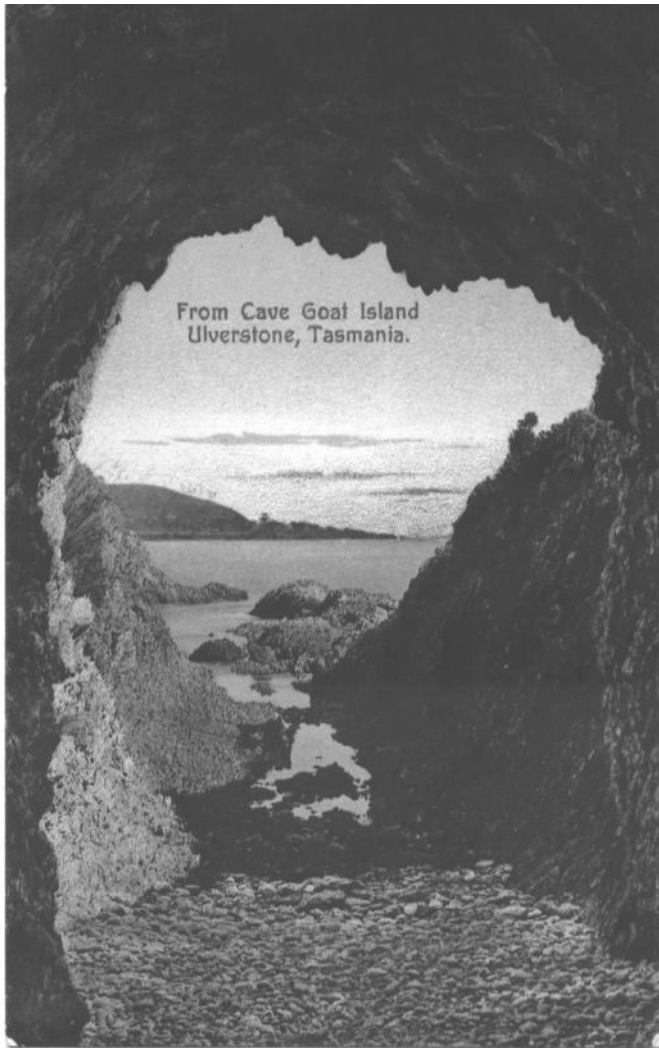
Ph Stephen Spurling III  
Pu Spurling & Sons, Launceston  
Pr In Prussia (Germany)  
F Full-frame b. & w. (A) or colour (B) print with  
superimposed title ; publisher imprint and number,  
which we use below, both on back.

1A.375 Brady's Cave, Lake Dulverton, Oatlands, /Tasmania H  
[ms.24 Jul.1933]

1B.375 SAME but in colour.

Tasmania : Goat Island





1. WYNPHOTOPRINT HAND-COLOURED SERIES [n.l. 1906]

Pu W.A. Skinner, Ulverstone

F Full-frame print in B. & W.(A) or colour (B) with title and serial number which we use below superimposed; publisher imprint on back.

1A.93 Picturesque Tasmania/Cave on Goat Island/Near Ulverstone, Tas. H [pm.29 Dec.1906]  
 Message says, "...camped by myself for... three days and nights in a fairly lonely spot. I keep my ears open eyes also a stick in my hand when asleep as a chap got floored off his horse with a waddy only a few yards from the hut last week."

1B.93 Picturesque Tasmania/Cave on Goat Island/Near Ulverstone, Tas.

2. SPURLING No. 6 SERIES [n.l. 1906]

Ph Stephen Spurling III

Pu Spurling & Sons, Launceston

Pr In Germany

F Full-frame colour print with superimposed title ; publisher imprint on back.

2.1 From Cave, Goat Island/Ulverstone, Tasmania V

[pm.21 Aug.1906]

3. SPURLING INDIVIDUALLY NUMBERED CARDS

Ph Stephen Spurling III  
Pu Spurling & Sons, Launceston  
Pr In Prussia (Germany)  
F Full-frame colour print with superimposed title ;  
publisher imprint and number, which we use below,  
both on back.

3.38A From Cave Goat Island/Ulverstone, Tasmania V  
(s.n.a. 2.1)

Tasmania : Goat Island

4. SPURLING NORTH WEST COAST SERIES

Ph Stephen Spurling III  
Pu Spurling & Sons, Launceston  
F Half-tone print with black line frame and white margin  
Title both superimposed on print and printed in lower  
margin.

4.1 From Cave, Goat Island, near Ulverstone V (superimposed  
title includes no. 309) (s.n.a. 2.1)

5. ROSE SERIES

Pu, Pr & F as normal Rose series

5.P12306 Goat Island Cave, Ulverstone, Tas. V R9

Tasmania : Gunns Plains

Gunns Plains is a small area of limestone South of Ulverstone  
with a few caves, one of which is open to the public as a tourist  
cave.

Message spread over the backs of 2.1313 and 2.1518 below reads :

'Feb. 19th. '09

To go through these beautiful caves, you have first of all to  
descend about fifty-seven feet before you get on a level to walk  
along, going down by a long flight of steps with a good handrail  
from top to the bottom. This is the work of the "Tourist  
Association" who have taken them over. They were officially  
opened by the Premier and party on Jan. 5th., three days after  
our visit, when over 200 persons went through, you are taken in  
by the guide 10 at a time, being charged one shilling for  
admission children under 16 are not allowed in, you have to have  
lights, each of our party had an acetylene gas lamp, we also had  
magnesium lights. . . There is some most wonderful things to be  
seen in these caves, it is almost impossible to realise such  
things to be in the world, they are nice and dry and not at all

bad to get about in, in lots of places it is quite seventy feet from the bottom to the top. About 60 persons entered into them the day we went through, the party I was in followed Mr. N.G. Hickmans party, we were in just one hour and a quarter & when we were brought out it was raining hard and it looked as if we were going to get drenched, nobody seemed to heed the rain, all they could talk of was the "sights". They have been in over a mile, with no signs of the end in sight. They exceeded my expectations and have not been over-rated at all if anything, I think under. JWYS'

Tasmania : Gunns Plains

1. SPURLING INDIVIDUALLY NUMBERED CARDS [n.l. 1910]

Ph Stephen Spurling III  
Pu Spurling & Sons, Launceston  
Pr In Prussia (Germany)  
F Full-frame b. & w. print with superimposed title in white strip ; publisher imprint and number, which we use below, both on back.

- 1.438 The Mushroom, Ulverstone Caves, Tasmania V
- 1.439 The Weeping Rock, Ulverstone Caves, Tasmania V  
[ms.30 Dec.1911]
- 1.441 The Cathedral, Ulverstone Caves, Tasmania H
- 1.442 The Waxworks, Ulverstone Caves, Tasmania H
- 1.443 The Beanstalk, Ulverstone Caves, Tasmania V  
[ms. 24 May 1910]

2. SPURLING REAL PHOTO SERIES (Numbered) [n.l. 1909]

Ph Stephen Spurling III  
Pu Spurling & Son.  
F Real photo with wide lower margin ; Title, serial number and publisher imprint superimposed on view in Italic caps. (As Mole Creek 3)

- 2.1313 Angels Wings Ulverstone Caves V Empire  
[ms.19 Feb.1909]
- 2.1314 The Mushroom Ulverstone Caves V (s.n.a. 1.438)
- 2.1317 The Shawls Ulverstone Caves V Empire
- 2.1518 The Blankets Ulverstone Caves V (s.n.a.1.441) Empire  
[ms.19 Feb.1909]

3. SPURLING REAL PHOTO SERIES (Un-numbered)

Ph Stephen Spurling III  
Pu Spurling & Son

F Real photo with narrow white margins and title  
superimposed in mix of italic & roman caps.  
(Cf. Mole Creek 5)

3.1 The Mushroom/Ulverstone Caves Tas. V (s.n.a. 1.438)K-F

#### 4. SPURLING/ROSE SERIES

Ph Stephen Spurling III  
Pu & Pr Apparently Rose Stereograph  
F All cards are re-photographed Spurling views, usually  
with the original title and imprint, from Series  
2 above; all have Rose backs, but no imprint.

4.1	The Mushroom, Ulverstone Caves 1314 Spurling V	R9
	(s.n.a. 1.438)	
4.2	The Shawls, Ulverstone Caves 1317 Spurling V	R5,R9
4.3	(untitled, depicts pool reflection) V	R9
4.4	(untitled but s.n.a.1.441)	R9

Tasmania : Gunns Plains

#### 5. ROSE SERIES

Ph Stephen Spurling III (not acknowledged)  
Pu & Pr Rose Stereograph Co., Armadale  
F Standard Rose Format ; we have used the Rose serial  
number in our number below.

5.P12422	The Blankets, Gunns' Plains Caves, Tas.	R5
	(s.n.a. 1.441) (picture is printed upside down)	
5.P12423	The Mushroom, Gunns' Plains Caves, Tas.	*
	(s.n.a. 1.438)	
5.P12424	The Shawls, Gunns' Plains Caves, Tas.	*
	(s.n.a. 2.1317)	
5.P12425	The Fairy Playground, Gunns' Plains Caves, Tas.	*
	(s.n.a. 4.3)	

Note : An obvious attempt has been made to erase the  
original Spurling caption from the negatives of  
5.P12423 and 5.P12424 - not with complete success.

#### SUMMARY of negatives

Weeping Rock	1.439/	/	/	/	
Cathedral/Blankets	1.441/	2.1518/	/	4.4/	5.P12422
Waxworks	1.442/	/	/	/	
Beanstalk	1.443/	/	/	/	
Angel's Wings	/	2.1313/	/	/	
Mushroom	1.438/	2.1314/	3.1/	4.1/	5.P12423
Shawls	/	2.1317/	/	4.2/	5.P12424
Fairy Playground	/	/	/	4.3/	5.P12425

Tasmania : Hastings

In 1917, workers at the Hastings timber mill in southern Tasmania discovered three of caves, respectively named Newdegate, King George V and Beattie. The latter, of course, was for J.W. Beattie, who photographed the caves soon after their discovery and described them in the Hobart Mercury of 12th. April 1918. Although of considerable beauty, Newdegate Cave was not opened

for tourism until 19th. January 1939 ; accordingly, few postcards fall within the scope of this work.

1. J.W. BEATTIE REAL PHOTO SERIES

Ph, Pu & Pr J.W. Beattie  
F Real photograph with Beattie imprint on back

1.1 (Queen Mary's Bower, King George Cave, Hastings) H  
Title in pencil on back [ms.22 May 1928] K-D

2. TASMAN SERIES

Ph J.C. Breaden  
F Real Photo with superimposed title in hand-written script (as 3 below) on back with Tasman series imprint

- 2.1 The Entrance Hall, Newdegate Cave, Hastings  
[ms.1 Mar.1939]
- 2.2 A Wall Grotto, Newdegate Cave, Hastings [ms.1 Mar.1939]
- 2.3 Cathedral Roof, Newdegate Cave, Hastings  
[ms. 24 Mar.1939]
- 2.4 In the Cathedral, Newdegate Cave, Hastings  
[ms.1st. Mar.1939]
- 2.5 The Organ Gallery in the Cathedral, Newdegate Cave,  
Hastings [ms.16 May 1939]
- 2.6 The Veiled Lady in the Cathedral, Newdegate Cave,  
Hastings [ms.1 Mar.1939]
- 2.7 Organ Gallery, Newdegate Cave, Hastings [ms.1 Mar.1939]
- 2.8 The Great Hall, Newdegate Cave, Hastings  
[ms. 1 Mar.1939]
- 2.9 Shawls in Beattie Cave, Hastings [ms.1 Mar.1939]
- 2.10 Pulpit & Canopy, Newdegate Cave, Hastings  
[ms. 24 May 1939] Is numbered JCB 16
- 2.12 In Newdegate Cave, Hastings [ms.1 Mar.1939]  
Is numbered JCB 17
- 2.13 The Stairway, Newdegate Cave, Hastings [ms.1 Mar.1939]  
Is numbered JCB 19
- 2.14 Newdegate Cave, Hastings [ms.1 Mar.1939]  
Is numbered JCB 26

3. J.C. BREADEN REAL PHOTO SERIES

Ph J.C. Breaden  
F Real photo cards with superimposed title and JCB initials in hand-written script ; both numbered (3A) and un-numbered (3B) cards occur.

- 3A.3 Titania's Palace, Newdegate Cave, Hastings K-D  
[ms. 13 June 1941] This card has the signature  
J.C. Breaden printed across the stamp box.
- 3A.13 The Watchman, Newdegate Cave K-D
- 3A.15 The Wedding Cake, Newdegate Cave, Hastings K-D  
[ms. 13 June 1941]

- 3B.1 Titania's Palace/ Hastings Cave H blank
- 3B.2 Titania Hall, Newdegate Cave, Hastings V blank



Tasmania : Hobart

Hobart is also situated in an area where volcanic rocks predominate. A few small caves or cave-like features are known, both on Mt. Wellington which overlooks the city and along the coast.

1. FELLOWES REAL PHOTO SERIES

Ph & Pu D.I.C.

F Real photo with wide margins all round and superimposed title; publisher imprint on back. Each card has a number which we incorporate below.

1.770 Rocky Whelan's Cave, Mt. Wellington, Hobart. H K-D  
This is a small rock shelter in Triassic sandstones, and was used in the film Manganinie.

1.870 The Blowhole, Brown's River, Near Hobart V  
This is almost certainly what is now usually known as Blackman's Bay Blowhole (Kiernan 1979)

2. JOHN WATT BEATTIE SERIES [n.l. 1907]

Ph & Pu J.W. Beattie

F Printed by collotype with title and serial number which we use below in wide lower margin; publisher's imprint on back.

2.58 Blow Hole, Brown's River H [pm.10 Jan.1907]

Tasmania : Hobart

3. JOHN WATT BEATTIE REAL PHOTO SERIES

Ph & Pu J.W. Beattie

F Real photo with superimposed title and imprint ;  
Serial number which we incorporate below ; imprint also overprinted on back.

3.906 Blowhole, Brown's River H

4. McVILLY & LITTLE COLOUR SERIES (See Tasman Peninsula 10)

Pu McVilly & Little

Pr In Saxony (Germany)

F Full-frame view with superimposed title in script ;  
Publisher imprint and card serial no. (which we use below) on back.

4.38 Blow Hole, Browns River, near Hobart, Tas. H

5. SOUTHEY REAL PHOTO SERIES

Ph C. Southey  
F Real photo with medium white margins ; title and  
superimposed in white.  
5.1 Blowhole Browns River Nr Hobart Tasmania H K-D(6)

6. H. DART SERIES

Ph H. Dart, Hobart (Harry Dart, at 129 Liverpool St.  
from 1896 - Davis & Stanbury 1985 : 151)  
F Collotype print with title in medium lower margin.

6.1 Blow Hole, Brown's River V

7. (unidentified)

F Real photo with superimposed title

7.1 Caves, Bellerive [pm.19 Apr.1910] Empire

These are small holes in sandstone.

Tasmania : Mt. Roland

One of the dominant sights of Northern Tasmania and near to Mole  
Creek (see above) is Mt. Roland. One of the photographs from  
Spurling's pioneer ascent shows the so-called Hanging Rock - a  
massive arch - situated near the summit.

1. SPURLING INDIVIDUALLY NUMBERED CARDS [n.l. 1911]

Ph Stephen Spurling III  
Pu Spurling & Sons, Launceston  
Pr In Prussia (Germany)  
F Full-frame b. & w. print with superimposed title ;  
publisher imprint and number both on back.

1.122.1 The Hanging Rock, Mt. Roland, Tasmania H  
[pm.27 Jan.1911] Title in sepia

1.122.2 SAME but title in red

Tasmania : Murchison River

Murchison River is a tributary of the Pieman, in the North-West  
of the state not far from the famous Cradle Mountain Park. The  
real photo card below depicts a massive rock overhang, with a man  
standing beneath. It appears to be a personal photograph as it  
has a hand-written title.

Hanging Rock Murchison River V [ms. 26 Mar.1908] RP1

Tasmania : West Coast

1. FRED BOOTY ROUGH SEA SERIES [n.l. 1907]

At Fred Booty (Cook 1986, pp. 105-6)  
Pu V.S.M. (Victoria Stamp Market) (Cook 1986, pp. 154-5)  
F Full-frame colour print with title and artist's name  
("Fred B.") superimposed ; publisher imprint on back.

This is one of an extensive series, covering coastal scenes  
from all parts of Australia, and all depicting rough seas.

1.1 Rough Sea, Devil's Arch, West Coast, Tasmania H  
[pm.24 Dec.1907]

2. JOHN WATT BEATTIE REAL PHOTO SERIES

Ph & Pu J.W. Beattie  
F Real photo with superimposed title and imprint ;  
Serial number which we incorporate below.

2.481B The Grummet Rock showing entrance Prison Cave H  
K-D(20)

The Grummet Rock is a tiny island situated in Macquarie Harbour, a few hundred metres from Sarah (or Settlement) Island. It was initially utilised as a prison for female convicts, then later for some of "the worst characters" from Sarah Island. It is said to have been the scene of considerable violence and a number of murders. Thus, it is not just the cave which was a prison, but the whole island, tiny as it was.  
[lence and a number of